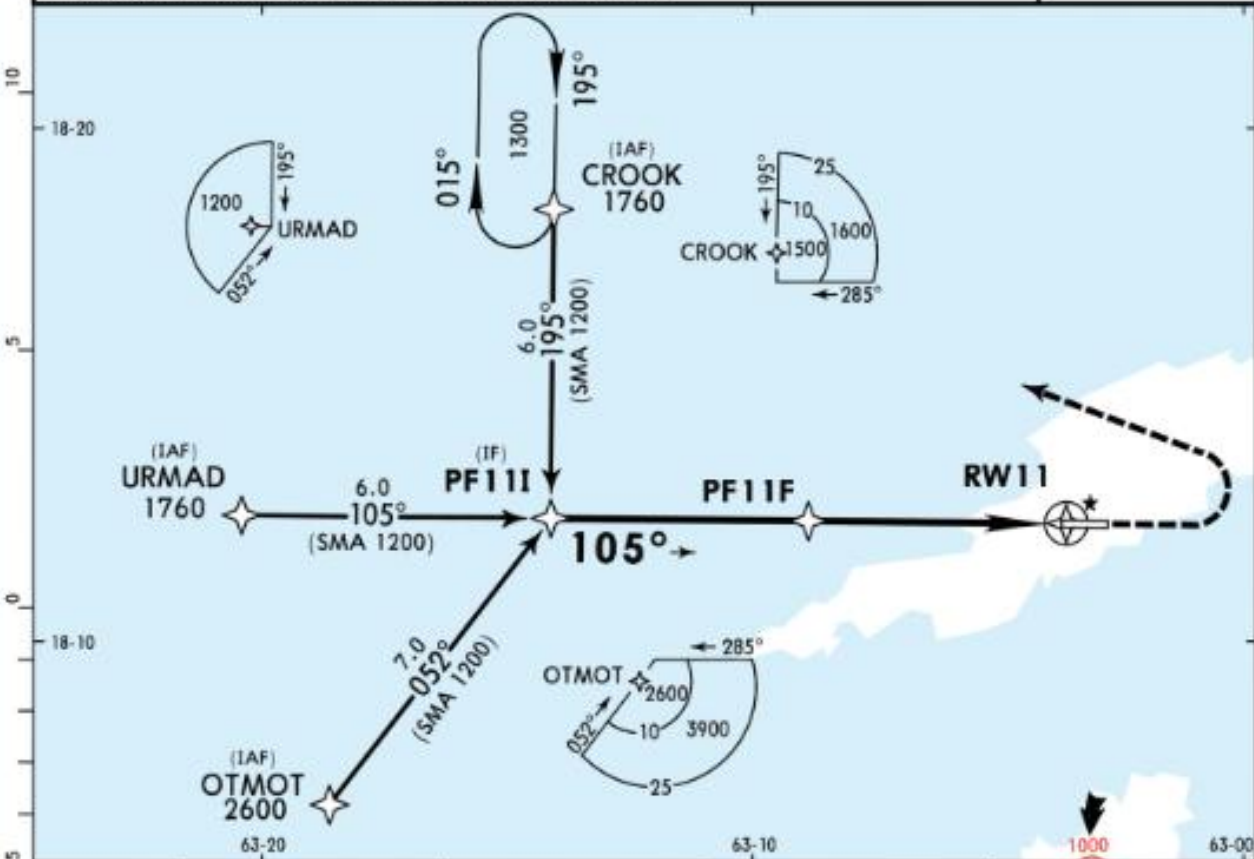


PARKING SPOT COORDINATES		
SPOT NO.	COORDINATES	ELEV.
1, 2	N18 12.4 W063 03.2	102'(31m)
3, 4	N18 12.4 W063 03.1	102'(31m)
5, 6	N18 12.4 W063 03.1	102'(31m)
7	N18 12.4 W063 03.1	101'(31m)
8	N18 12.4 W063 03.1	102'(31m)
9	N18 12.3 W063 03.1	100'(30m)
10	N18 12.3 W063 03.1	100'(31m)

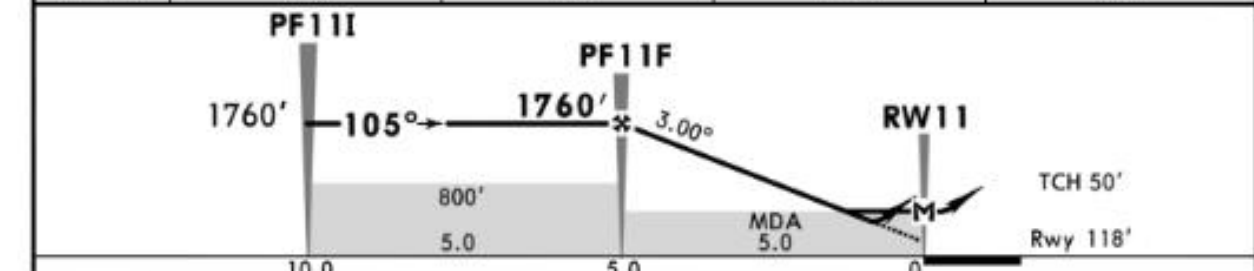
ADDITIONAL RUNWAY INFORMATION					
RWY	DESCRIPTION	SURFACE	USABLE LENGTHS		WIDTH
			LANDING BEYOND Threshold	Glide Slope TAKE-OFF	
11 29	RL PAPI-L (angle 3.0°)	grooved	4472' 1363m	4964' 1513m	98' 30m

SECTION	TAKE-OFF		ENGINES	REMARKS
	AIR CARRIER (JAA)	AIR CARRIER (FAR 121)		
A	LVP must be in force All Rwys RCLM (DAY only) or RL	All Rwys RCLM (DAY only) or RL	2	400m
B			Eng	
C			3 & 4	
D	300m	400m	Eng	

*JULIANA Approach				*C.J. LLOYD Tower	
128.95				118.5	
RNAV	Final Apch Crs 105°	Procedure Alt PF11F 1760' (1642')	LNAV/VNAV Refer to Minimums	Apt Elev 124' Rwy 118'	TAA 25 NM IAF
MISSED APCH: Climb straight ahead to 1000', then LEFT turn to CROOK and hold.					
Alt Set: hPa Rwy Elev: 4 hPa Trans level: FL065 Trans alt: 5000'					
RNP Apch 1. CAUTION: Visual segment penetrated by trees and terrain. 2. Baro-VNAV not authorized below 32°F (0°C) and above 122°F (50°C).					



DIST TO THR	5.0	4.0	3.0	2.0
ALTITUDE	1760'	1440'	1125'	805'



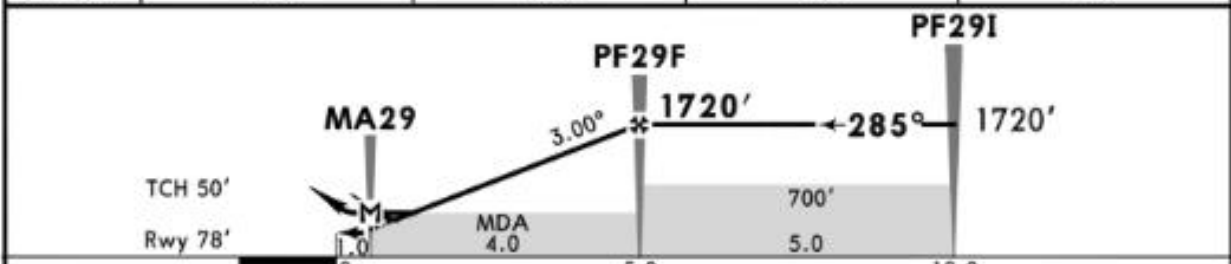
Gnd speed-Kts	70	90	100	120	140	160	PAPI-L	1000'	LT	CROOK
Descent angle	3.00°	372	478	531	637	743				
LNAV/VNAV: MAP at DA										
LNAV: MAP at RW11										

STRAIGHT-IN LANDING RWY 11				CIRCLE-TO-LAND	
LNAV/VNAV		LNAV		Not Authorized North of Aerodrome	
DA(H) A: 520' (402') B: 530' (412')		C: 550' (432')		MDA(H)	
A		1600m		100 Max Kts: 630' (506') - 1600m	
B		1600m		135 Max Kts: 780' (656') - 1600m	
C		2000m		180 Max Kts: 880' (756') - 3600m	
D		NOT APPLICABLE		D NOT APPLICABLE	

*JULIANA Approach				*C.J. LLOYD Tower	
128.95				118.5	
RNAV	Final Apch Crs 285°	Procedure Alt PF29F 1720' (1642')	LNAV/VNAV Refer to Minimums	Appt Elev 124'	TAA 25 NM IAF
MISSED APCH: Climb straight ahead to 1000', then RIGHT turn to TECUP and hold.					
Alt Set: hPa Rwy Elev: 3 hPa Trans level: FL065 Trans alt: 5000' RNP Apch 1. CAUTION: Visual segment penetrated by trees and terrain. 2. Baro-VNAV not authorized below 32°F (0°C) and above 122°F (50°C).					



DIST TO THR	2.0	3.0	4.0	5.0
ALTITUDE	765'	1085'	1400'	1720'



Gnd speed-Kts	70	90	100	120	140	160	PAPI-L	1000'	RT	TECUP
Descent angle 3.00°	372	478	531	637	743	849				
LNAV/VNAV: MAP at DA										

STRAIGHT-IN LANDING RWY 29				CIRCLE-TO-LAND		
LNAV/VNAV		LNAV		Not Authorized North of Aerodrome		
DA(H)	A: 470' (392')	C: 500' (422')	MDA(H)	470' (392')		
	B: 480' (402')			Max Kts	MDA(H)	
A	1600m			100	630' (506') -1600m	
B	1600m			135	780' (656') -1600m	
C	2000m			180	880' (756') -3600m	
D	NOT APPLICABLE				D	NOT APPLICABLE

PANS OPS