

RWY	USABLE LENGTHS		TAKE-OFF	WIDTH
	LANDING BEYOND Threshold	Glide Slope		
9	② MIRL PAPI-R (angle 2.83°)	5126'		100'
27	② MIRL	4299'		

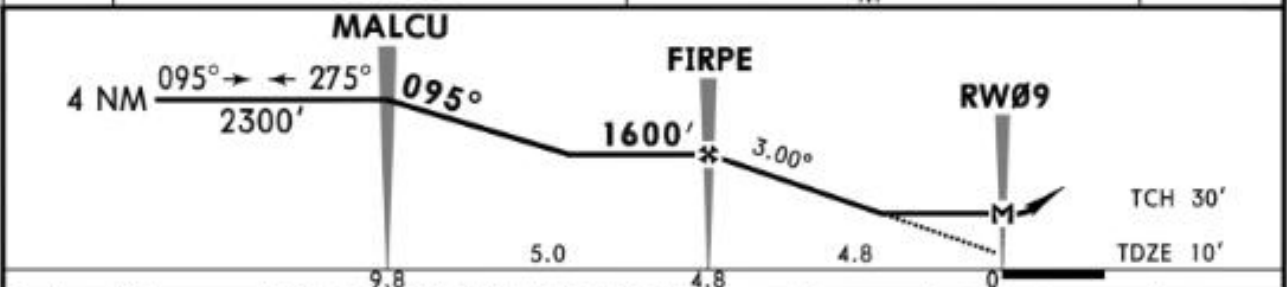
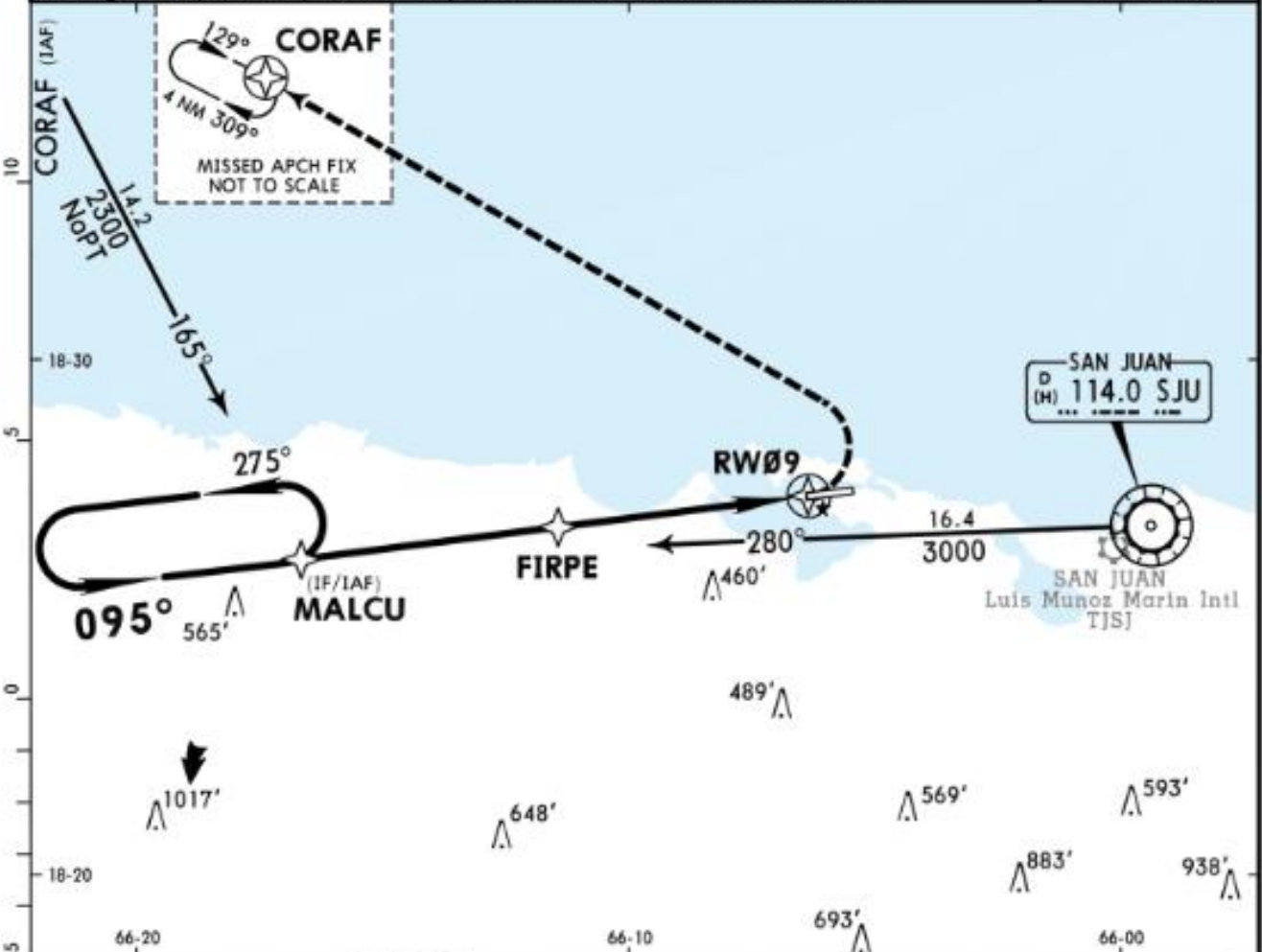
- ① Irregular and uneven surface due to settlement in several areas.
- ② Preset to medium intensity after tower hours.

TAKE-OFF & OBSTACLE DEPARTURE PROCEDURE		FOR FILING AS ALTERNATE	
	Rwy 27	Rwy 9	
	With Min climb of 300'/NM to 1200'	With Min climb of 400'/NM to 2000'	
1 & 2 Eng	300-1	300-1¾	A
3 & 4 Eng			B
			C
			D

OBSTACLE DP: Rwy 9, climb heading 095° to 2000' before turning South.
 Rwy 27, climb heading 275° to 1200' before turning South.

TAKE-OFF OBSTACLE NOTES: Note: Rwy 9, vehicles on road beginning 190' from DER, crossing centerline, up to 15' AGL/23' MSL. Trees beginning 200' from DER, up to 35' AGL/55' MSL. Mobile crane 511' from DER, 570' right of centerline, 180' AGL/199' MSL. Buildings with obstruction lighting beginning 1100' from DER, 430' right of centerline, up to 275' AGL/285' MSL. Buildings beginning 2400' from DER, 640' right of centerline, up to 286' AGL/298' MSL. Buildings beginning 3400' from DER, 200' left of centerline, up to 174' AGL/202' MSL.
 Note: Rwy 27, bushes beginning 20' from DER, left and right of centerline, up to 8' AGL/21' MSL. Trees beginning 80' from DER, 390' right of centerline, up to 35' AGL/44' MSL. Ships maneuvering from 2000' to 5200' from DER, up to 236' MSL.

ATIS 120.4		SAN JUAN Approach (R) North & East 120.9 West & Southwest 119.4		*ISLA GRANDE Tower CTAF 135.875	*Ground 121.7
RNAV	Final Apch Crs 095°	Minimum Alt FIRPE 1600' (1590')	LNAV MDA(H) 540' (530')	Apt Elev 10' TDZE 10'	5100 MSA RW09
MISSED APCH: Climbing LEFT turn to 3000' direct CORAF and hold.					
RNP Apch	Alt Set: INCHES		Trans level: FL 180	Trans alt: 18000'	
1. Circling Rwy 27 not authorized at night. 2. Use Luis Munoz Marin Intl altimeter setting. 3. Rwy 9 helicopter visibility reduction below 3/4 SM not authorized.					



Gnd speed-Kts	70	90	100	120	140	160	PAPI-R 3000' LT	CORAF
Descent Angle 3.00°	372	478	531	637	743	849		
MAP at RW09								

STRAIGHT-IN LANDING RWY 9				CIRCLE-TO-LAND			
LNAV MDA(H) 540' (530')				MDA(H)			
A	1			Max Kts 90	660' (650') -1		
B				120			
C	NA			C	NA		
D				D			

TERPS 3000'