

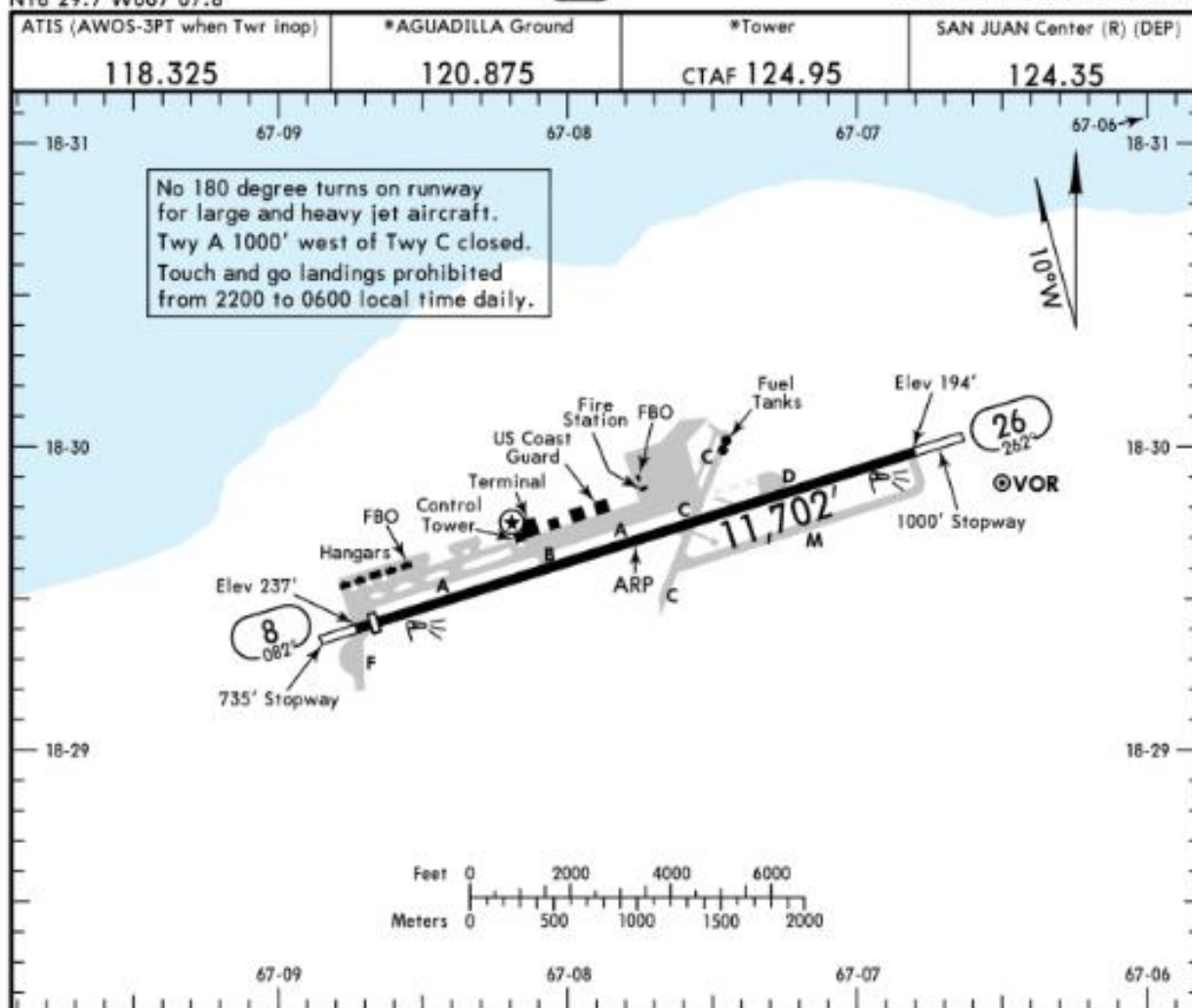
TJBQ/BQN

Apt Elev 237'
N18 29.7 W067 07.8

11 JAN 19 10-9

AGUADILLA, PUERTO RICO

RAFAEL HERNANDEZ



ADDITIONAL RUNWAY INFORMATION

RWY		USABLE LENGTHS			WIDTH
		Threshold	LANDING BEYOND Glide Slope	TAKE-OFF	
8	HIRL CL REIL PAPI-L (angle 3.0°)	1			200'
26	HIRL CL PAPI-L (angle 3.0°)				

1 LDA: 11313'

TAKE-OFF & OBSTACLE DEPARTURE PROCEDURE		FOR FILING AS ALTERNATE	
All Rwy's		RNAV (GPS) Rwy 8 VOR Rwy 8 VOR DME Rwy 8	
Adequate Vis Ref	STD		Other
1 & 2 Eng	1/4	A	800-2
3 & 4 Eng		B	
	1	C	
	1/2	D	

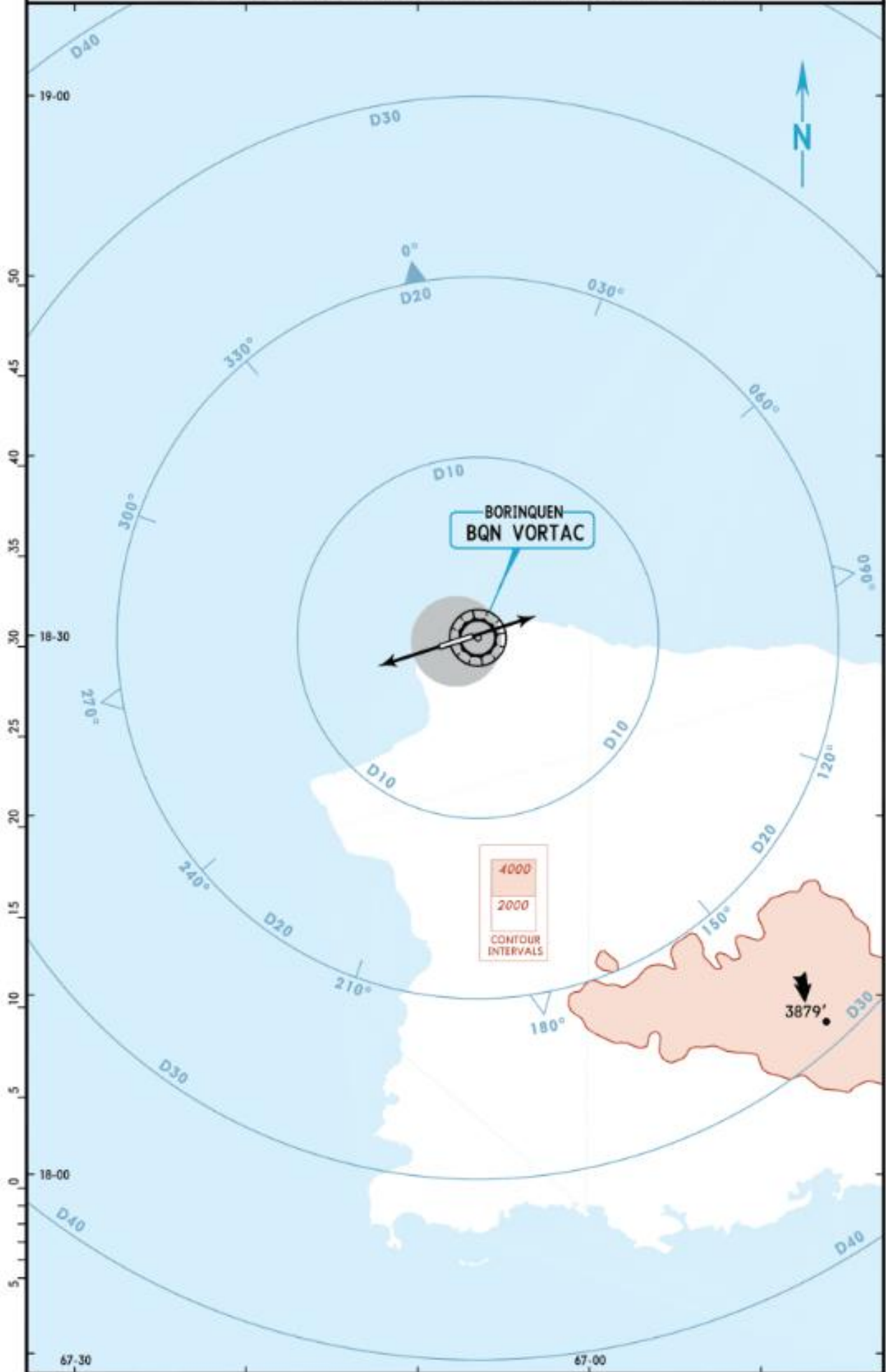
OBSTACLE DP: Rwy 8, climb on a heading between 262° clockwise to 158° from departure end of runway; Rwy 26, climb on a heading between 230° clockwise to 082° from departure end of runway.

CHANGES: Control Tower moved.

© JEPPESEN, 2001, 2019. ALL RIGHTS RESERVED.

A M E N D O

OBSTACLE DEPARTURE OVERVIEW ALL RWYS



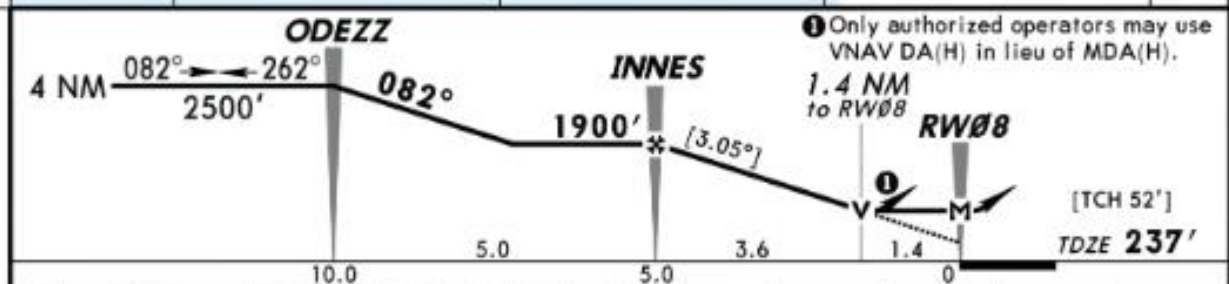
TJBQ/BQN
RAFAEL HERNANDEZ

JEPPESEN
2 JAN 15 (12-1)

AGUADILLA, PUERTO RICO
RNAV (GPS) Rwy 8

BRIEFING STRIP 11

ATIS (AWOS-3 when Twr Inop)	SAN JUAN Center (R) (APP)	*AGUADILLA Tower	*Ground
118.32	124.35	CTAF 124.95	120.87
RNAV	Final Apch Crs 082°	Minimum Alt INNES 1900' (1663')	LNAV MDA(H) 760' (523')
MISSED APCH: Climb to 1000', then climbing LEFT turn to 2500' direct ODEZZ and hold.			4900'
Alt Set: INCHES Trans level: FL 180 Trans alt: 18000'			
1. Use local altimeter setting; if not received procedure not authorized. 2. DME/DME RNP-0.30 not authorized. 3. Helicopter visibility reduction below 3/4 SM not authorized. 4. VGSI and descent angles not coincident.			MSA RW08



Gnd speed-Kts	70	90	100	120	140	160	REIL PAPI-L	1000'	2500'	ODEZZ
Descent Angle [3.05°]	378	486	540	648	755	863		↑	LT	
MAP at RW08										

STRAIGHT-IN LANDING RWY 8		CIRCLE-TO-LAND	
LNAV MDA(H) 760' (523')		Not Authorized South of Rwy 8-26	
A		Max Kts	MDA(H)
B	1	90	760' (523')-1
C	1½	120	760' (523')-1½
D	1¾	140	760' (523')-1¾
		165	800' (563')-2

TERPS AMEND 0C 8 JAN 2015

CHANGES: Notes.

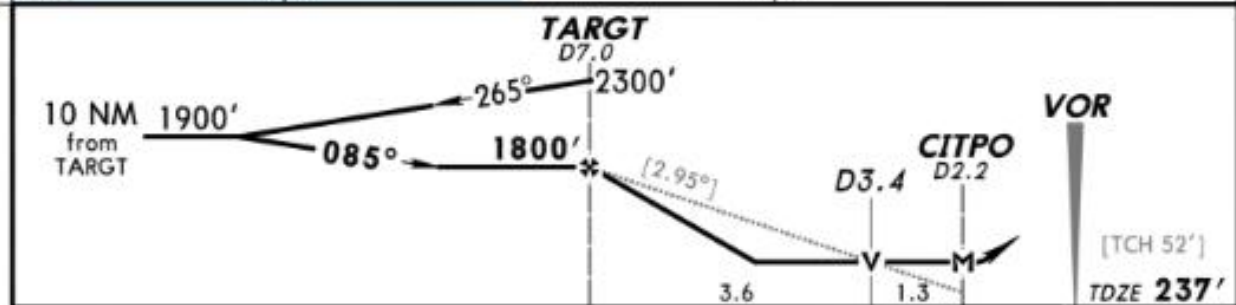
© JEPPESEN, 2002, 2015. ALL RIGHTS RESERVED.

TJBQ/BQN
RAFAEL HERNANDEZ

JEPPESEN
2 JAN 15 (13-1)

AGUADILLA, PUERTO RICO
VOR DME Rwy 8

ATIS (AWOS-3 when Twr inop) 118.32	SAN JUAN Center (R) (APP) 124.35	*AGUADILLA Tower CTAF 124.95	*Ground 120.87
VOR BQN 113.5	Final Apch Crs 085°	Minimum Alt TARGT 1800' (1563')	MDA(H) 720' (483')
Apt Elev 237' TDZE 237'			<p>MSA BQN VOR</p>
<p>MISSED APCH: Climb to 1000' then climbing LEFT turn to 2300' outbound via BQN VOR R-265 to TARGT D7.0 and hold.</p> <p>Alt Set: INCHES Trans level: FL 180 Trans alt: 18000'</p> <p>1. Use local altimeter setting; if not received, procedure not authorized. 2. Helicopter visibility reduction below 3/4 SM not authorized. 3. VGSI and descent angles not coincident.</p>			



Gnd speed-Kts	70	90	100	120	140	160	REIL PAPI-L	1000'	2300'	BQN via 113.5 R-265	TARGT
Descent Angle [2.95°]	365	470	522	626	731	835		↑	LT		
MAP at CITPO											

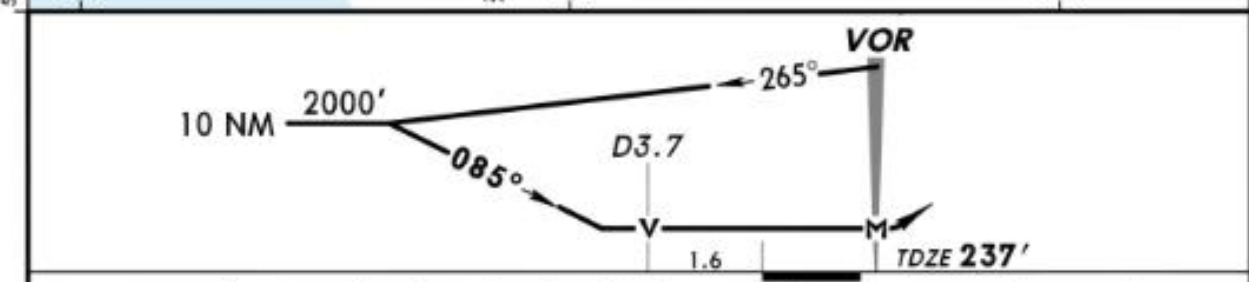
STRAIGHT-IN LANDING RWY 8		CIRCLE-TO-LAND	
MDA(H) 720' (483')		Not Authorized South of Rwy B-26	
		Max Kts	MDA(H)
A	1	90	720' (483')-1
B		120	
C	1½	140	720' (483')-1½
D		165	800' (563')-2

TERPS AMEND 3A, 8 JAN 2015

TJBQ/BQN
RAFAEL HERNANDEZ

JEPPESSEN AGUADILLA, PUERTO RICO
2 JAN 15 (13-2)
VOR Rwy 8

ATIS (AWOS-3 when Twr inop) 118.32		SAN JUAN Center (R) (APP) 124.35		*AGUADILLA Tower CTAF 124.95		*Ground 120.87	
VOR BQN 113.5	Final Apch Crs 085°	No FAF		MDA(H) 820' (583')	Apt Elev 237' TDZE 237'		
MISSED APCH: Climb to 2000' then LEFT turn direct BQN VOR and hold.							
Alt Set: INCHES		Trans level: FL 180		Trans alt: 18000'			
1. Use local altimeter setting; if not received, procedure not authorized. 2. Helicopter visibility reduction below 3/4 SM not authorized. 3. VGSI and descent angles not coincident.							



MAP at VOR	REIL PAPI-L	2000'	LT	D	BQN 113.5
------------	-------------	-------	----	---	-----------

STRAIGHT-IN LANDING RWY 8		CIRCLE-TO-LAND	
MDA(H) 820' (583')		Not Authorized South of Rwy 8-26	
A	1	Max Kts	MDA(H)
B	1	90	820' (583') - 1
C	1 1/2	140	820' (583') - 1 1/2
D	1 3/4	165	820' (583') - 2

TERPS AMEND 6C 8 JAN 2015

CHANGES: Notes.

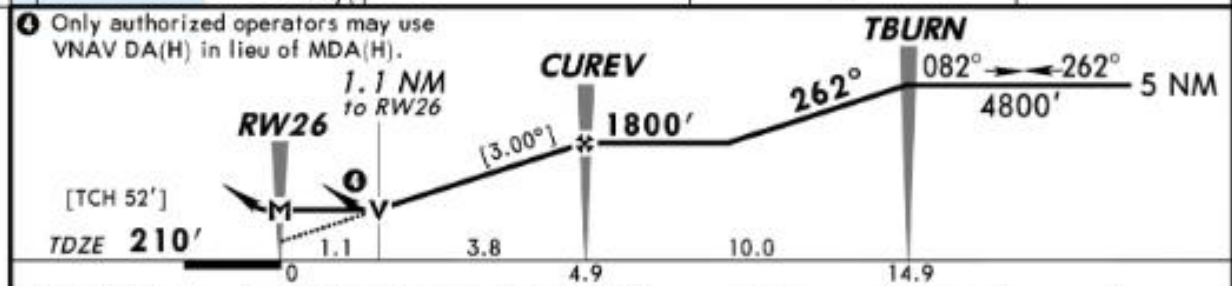
© JEPPESEN, 2001, 2015. ALL RIGHTS RESERVED.

TJBQ/BQN
RAFAEL HERNANDEZ

JEPPESEN
2 JAN 15 (12-2)

AGUADILLA, PUERTO RICO
RNAV (GPS) Rwy 26

ATIS (AWOS-3 when Twr Inop) 118.32	SAN JUAN Center (R) (APP) 124.35	*AGUADILLA Tower CTAF 124.95	*Ground 120.87
RNAV	Final Apch Crs 262°	Minimum Alt CUREV 1800' (1590')	LNAV MDA(H) 620' (410')
MISSED APCH: Climb to 3000' direct WITRA and on 317° track to AQABA and hold.			TAA 30 NM IAF
Alt Set: INCHES Trans level: FL 180 Trans alt: 18000' 1. Use local altimeter setting; if not received, procedure not authorized. 2. DME/DME RNP-0.30 not authorized. 3. Helicopter visibility reduction below 3/4 SM not authorized. 4. VGSI and descent angles not coincident.			



Gnd speed-Kts	70	90	100	120	140	160
Descent Angle [3.00°]	372	478	531	637	743	849
MAP at RW26						

TERPS		STRAIGHT-IN LANDING RWY26		CIRCLE-TO-LAND	
		LNAV		Not Authorized South of Rwy B-26	
		MDA(H) 620' (410')			
A		1	Max Kts	MDA(H)	
B			90	680' (443')-1	
C		1 1/8	120	700' (463')-1	
D			140	700' (463')-1 1/2	
			165	800' (563')-2	

CHANGES: Notes.

© JEPPESEN, 2013, 2015. ALL RIGHTS RESERVED.

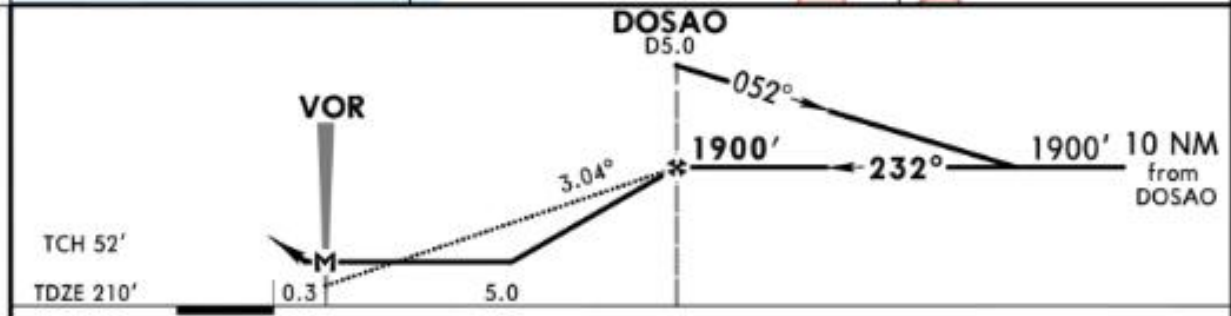
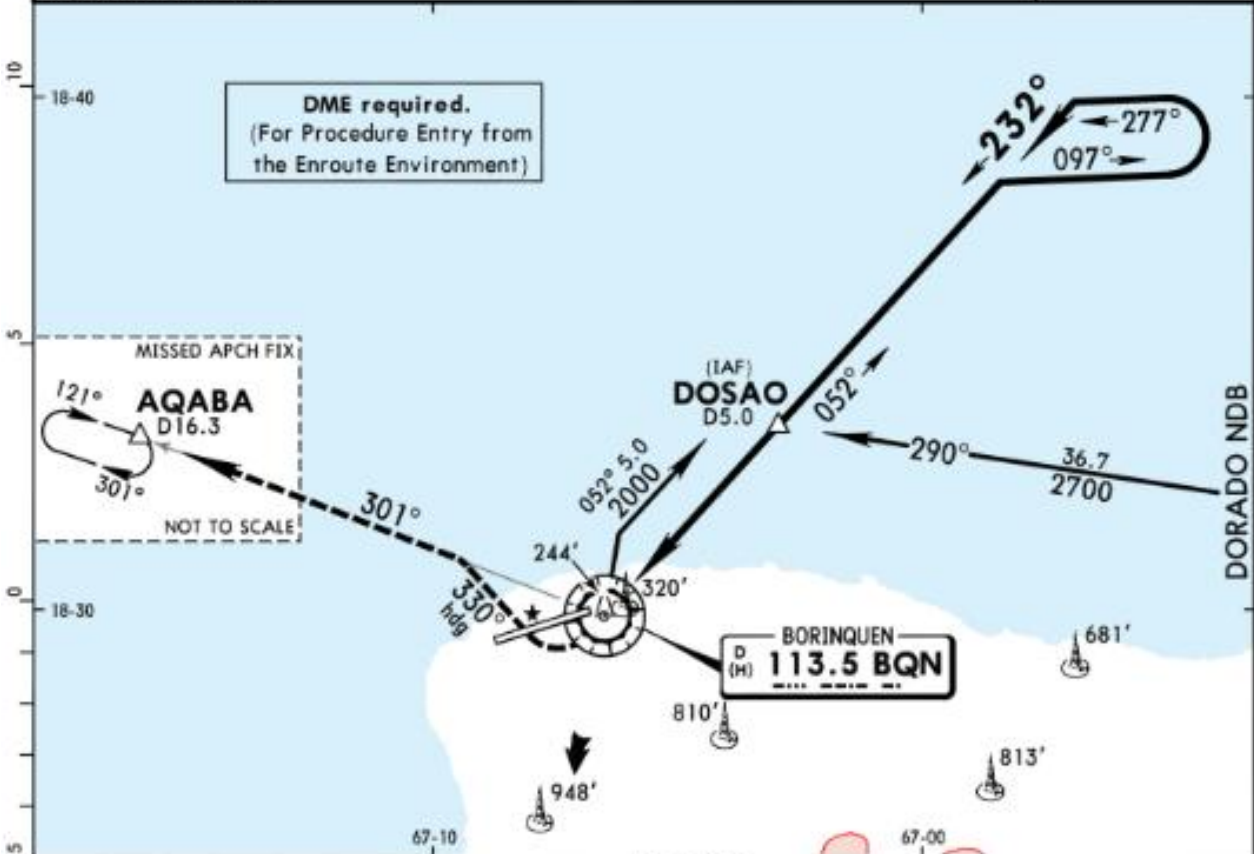
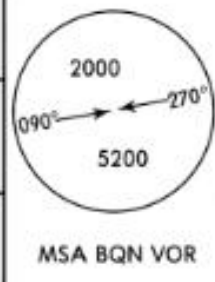
TERPS AMEND 08 8 JAN 2015

TJBQ/BQN
RAFAEL HERNANDEZ

JEPPESEN
6 OCT 17 (13-3)

AGUADILLA, PUERTO RICO
VOR Rwy 26

ATIS (AWOS-3PT when Twr Inop) 118.325	SAN JUAN Center (R) (APP) 124.35	*AGUADILLA Tower CTAF 124.95	*Ground 120.87
VOR BQN 113.5	Final Apch Crs 232°	Minimum Alt DOSAO 1900' (1690')	MDA(H) 620' (410')
Apt Elev 237'			TDZE 210'
MISSED APCH: Climb to 600', then climbing RIGHT turn to 3000' heading 330° and outbound on BQN VOR R-301 to AQABA/D16.3 and hold.			
Alt Set: INCHES			Trans alt: 18000'
1. DME Required. 2. If local altimeter setting not received, procedure not authorized. 3. Rwy 26 helicopter visibility below 3/4 SM not authorized. 4. VGSI and descent angles not coincident.			



Gnd speed-Kts	70	90	100	120	140	160	PAPI-L	600'	3000'	330° on hdg	BQN 113.5 R-301
Descent Angle 3.04°	376	484	538	645	753	861					
MAP at VOR											

TERPS		STRAIGHT-IN LANDING RWY26	CIRCLE-TO-LAND
		MDA(H) 620' (410')	Not Authorized South of Rwy 8-26
A		1	Max Kts 90 MDA(H) 680' (443') - 1
B			120 700' (463') - 1
C			140 700' (463') - 1½
D	1½		165 800' (563') - 2

TERPS AMEND 00 12 OCT 2017