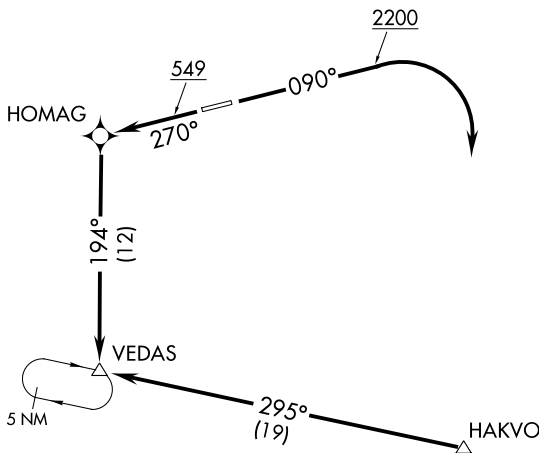


VEDAS THREE DEPARTURE (RNAV)

SAN JUAN CERAP DEP CON
128.65 279.6
UNICOM 123.0 (CTAF)

NOTE: GPS Required.
NOTE: RNAV 1.



TAKE-OFF MINIMUMS:

RWY 9: 500-2¼ with minimum climb of 260' per NM to 900.
 RWY 27: 500-2½ with minimum climb of 410' per NM to 1600 or standard with minimum climb of 570' per NM to 1300.

TAKE-OFF OBSTACLE NOTES:

Rwy 9: Vehicles on roadway beginning 26' from DER, left and right of centerline, up to 15' AGL/80' MSL. Trees beginning 70' from DER, 504' right of centerline, up to 100' AGL/165' MSL. Trees beginning 579' from DER, on centerline, up to 100' AGL/165' MSL. Trees beginning 1750' from DER, 956' right of centerline up to 100' AGL/493' MSL.

Rwy 27: Trees beginning 15' from DER, 225' left of centerline, up to 100' AGL/165' MSL. Trees beginning 16' from DER, 274' right of centerline, up to 100' AGL/165' MSL. Trees beginning 186' from DER, left and right of centerline, up to 100' AGL/165' MSL. Trees beginning 1206' from DER, 794' left of centerline, up to 100' AGL/493' MSL.

NOTE: Chart not to scale.



DEPARTURE ROUTE DESCRIPTION

TAKE-OFF RWY 9: Climb heading 090° to 2200, then right turn direct HAKVO and right turn via track 295° to VEDAS, Thence. . . .

TAKE-OFF RWY 27: Climb heading 270° to 549, then direct HOMAG and via track 194° to VEDAS, Thence. . . .

. . . . Maintain 5000, Expect filed altitude 10 minutes after departure.