

APP CRS <b>277°</b>	Rwy Idg <b>9000</b>
	TDZE <b>40</b>
	Apt Elev <b>74</b>

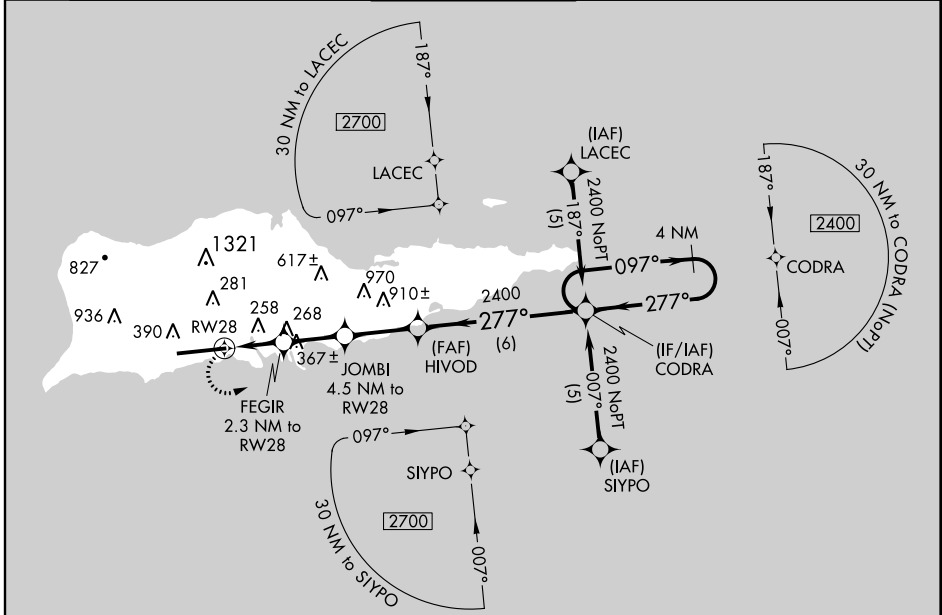
# RNAV (GPS) RWY 28

HENRY E. ROHLSSEN (STX)(TISX)

**▼** Circling NA N of Rwy 10-28. DME/DME RNP-0.3 NA. Visibility reduction by helicopters NA. When local altimeter setting not received, procedure NA.

MISSED APPROACH: Climbing left turn to 2400 direct CODRA and hold.

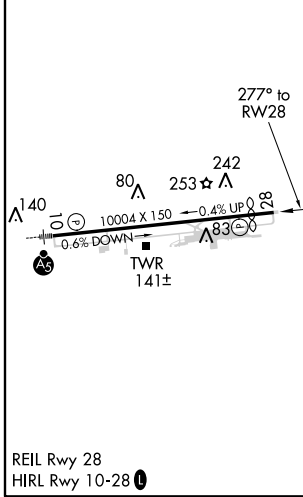
ATIS <b>135.65</b>	SAN JUAN CENTER <b>128.65 279.6</b>	ST. CROIX TOWER ★ <b>118.6(CTAF) 239.3</b>	GND CON <b>121.7</b>	UNICOM <b>123.0</b>
-----------------------	--	---	-------------------------	------------------------



SE-3, 08 JAN 2015 to 05 FEB 2015

SE-3, 08 JAN 2015 to 05 FEB 2015

ELEV 74	<b>D</b>	TDZE 40
---------	----------	---------



	2400	CODRA		4 NM Holding Pattern
	JOMBI 4.5 NM to RW28	HIVOD	CODRA	
	FEGR 2.3 NM to RW28			
	1.4 NM to RW28			
	1520			
	800			
	3.06°			
	TCH 55			
	1.4	0.9	2.2	2.6 NM
	6 NM			
	VGSI and descent angles not coincident (VGSI Angle 3.00/TCH 80).			
CATEGORY	A	B	C	D
LNAV MDA	560-1	520 (500-1)	560-1½ 520 (500-1½)	560-1¾ 520 (500-1¾)
CIRCLING	560-1	486 (500-1)	560-1½ 486 (500-1½)	640-2 566 (600-2)