

LOC I-STX <b>109.5</b>	APP CRS <b>097°</b>	Rwy ldg <b>9000</b>
		TDZE <b>74</b>
		Apt Elev <b>74</b>

# ILS or LOC RWY 10

HENRY E. ROHLSSEN (STX)(TISX)

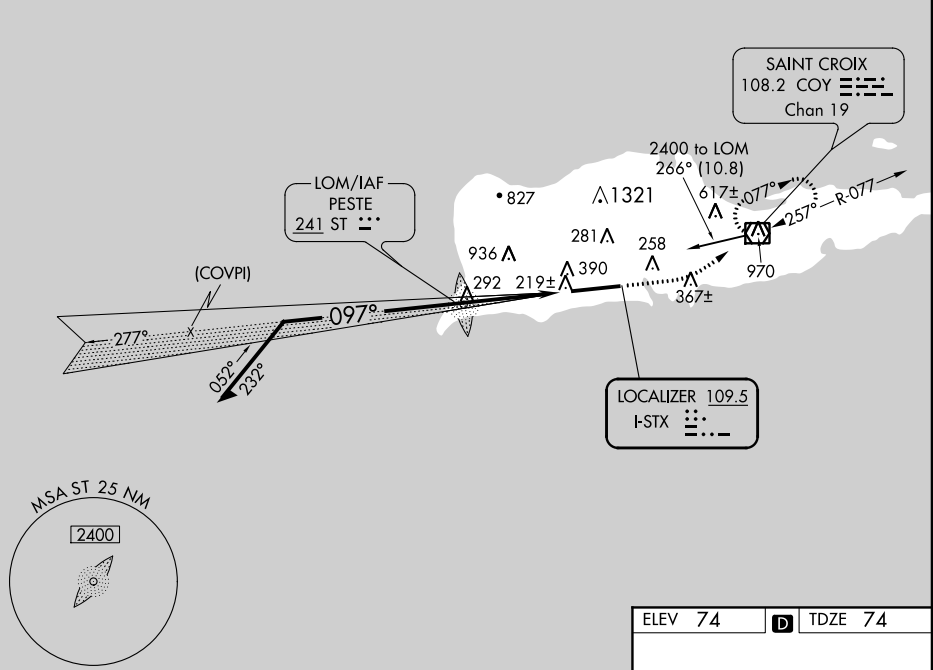
**⚠** Circling NA N of Rwy 10-28. If local altimeter setting not received, procedure NA. For inoperative MALSRS, increase S-ILS 10 all Cats visibility to 1.

**MALSRS**

**MISSED APPROACH:** Climb to 700 then climbing left turn to 2400 direct COY VOR/DME and hold, continue climb-in-hold to 2400.

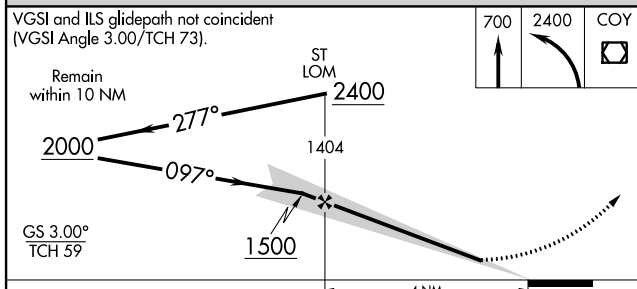
ATIS <b>135.65</b>	SAN JUAN CENTER <b>128.65 279.6</b>	ST. CROIX TOWER ★ <b>118.6 (CTAF) 239.3</b>	GND CON <b>121.7</b>	UNICOM <b>123.0</b>
-----------------------	--	--	-------------------------	------------------------

## ADF REQUIRED



SE-3, 08 JAN 2015 to 05 FEB 2015

SE-3, 08 JAN 2015 to 05 FEB 2015



ELEV 74	<b>D</b> TDZE 74
---------	------------------

FAF to MAP 4 NM					
Knots	60	90	120	150	180
Min:Sec	4:00	2:40	2:00	1:36	1:20

CATEGORY	A	B	C	D
S-ILS 10	375-1/2 301 (400-1/2)			
S-LOC 10	480-1/2	406 (500-1/2)	480-3/4	406 (500-3/4)
CIRCLING	480-1 406 (500-1)	540-1 466 (500-1)	540-1 1/2 466 (500-1 1/2)	640-2 566 (600-2)