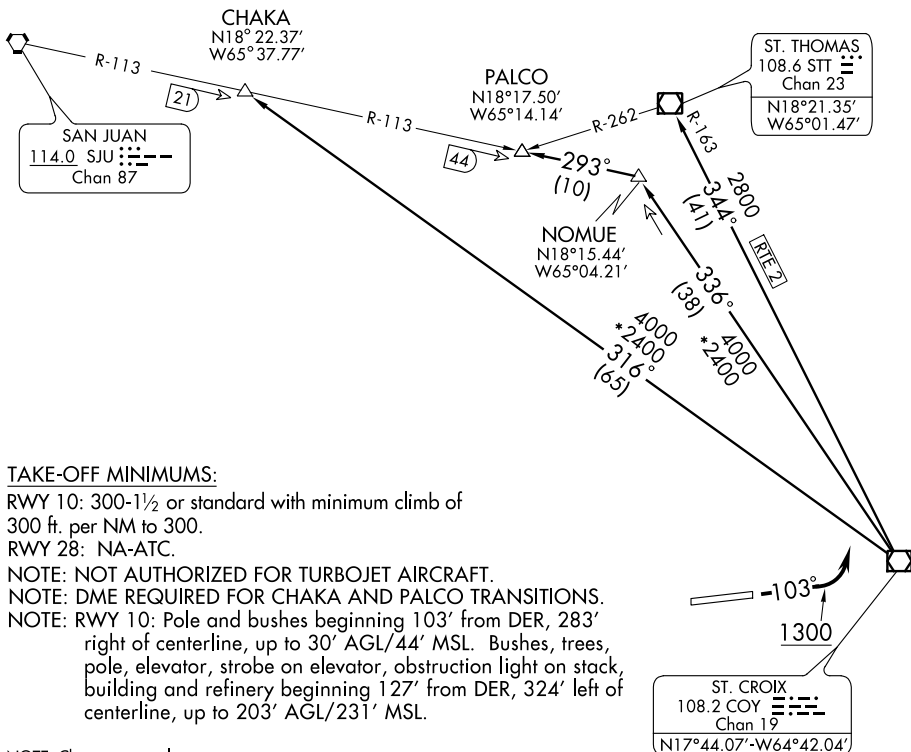


(HMLTN7.HMLTN) 14093

HAMILTON SEVEN DEPARTURE SL-5008 (FAA)

HENRY E ROHLSSEN (STX)(TISX)
CHRISTIANSTED, ST. CROIX, VIRGIN ISLANDS

ATIS 135.65
GND CON
121.7
ST. CROIX TOWER*
118.6 239.3
SAN JUAN DEP CON
128.65 279.6



TAKE-OFF MINIMUMS:

RWY 10: 300-1½ or standard with minimum climb of

300 ft. per NM to 300.

RWY 28: NA-ATC.

NOTE: NOT AUTHORIZED FOR TURBOJET AIRCRAFT.

NOTE: DME REQUIRED FOR CHAKA AND PALCO TRANSITIONS.

NOTE: RWY 10: Pole and bushes beginning 103' from DER, 283' right of centerline, up to 30' AGL/44' MSL. Bushes, trees, pole, elevator, strobe on elevator, obstruction light on stack, building and refinery beginning 127' from DER, 324' left of centerline, up to 203' AGL/231' MSL.

NOTE: Chart not to scale.

DEPARTURE ROUTE DESCRIPTION

TAKE-OFF RUNWAY 10: Climb via heading 103° to 1300, then climbing left turn to intercept assigned transition. Maintain 6000 unless assigned lower altitude. Expect FL280 or requested altitude ten minutes after departure.

CHAKA TRANSITION (HMLTN7.CHAKA): From over COY VOR/DME via COY R-316 to CHAKA/SJU 21 DME.

PALCO TRANSITION (HMLTN7.PALCO): From over COY VOR/DME via COY R-336 and SJU R-113 to PALCO INT/SJU 44 DME.

ST. THOMAS TRANSITION (HMLTN7.STT): From over COY VOR/DME via COY R-344 to STT VOR/DME.

HAMILTON SEVEN DEPARTURE
(HMLTN7.HMLTN) 14093

CHRISTIANSTED, ST. CROIX, VIRGIN ISLANDS
HENRY E ROHLSSEN (STX)(TISX)

SE-3, 08 JAN 2015 to 05 FEB 2015

SE-3, 08 JAN 2015 to 05 FEB 2015