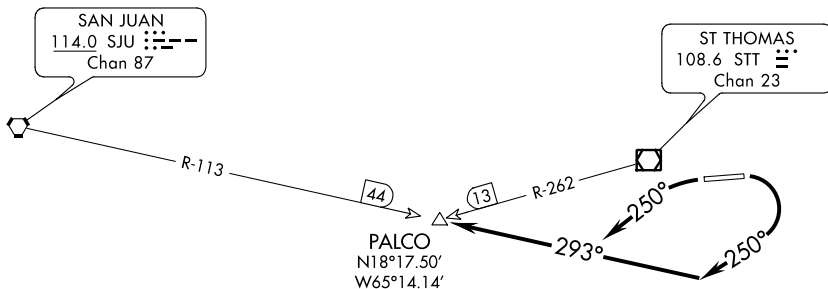


PALCO SIX DEPARTURE

ATIS 124.0
GND CON
121.9
ST THOMAS TOWER ★
118.8 (CTAF) 257.6
118.1 (NORTH OF ISLAND)
SAN JUAN DEP CON
128.65 279.6



TAKE-OFF MINIMUMS:

Rwy 10: 400-1 with minimum climb of 462' per NM to 1400 or 2100-2½ for climb in visual conditions.

Rwy 28: 800-3 or STANDARD with a minimum climb of 366 feet per NM to 1000.

TAKEOFF OBSTACLE NOTES:

Rwy 10: Antenna on building 258 feet from DER, 485 feet left of centerline, 25 feet AGL/ 41feet MSL. Multiple trees beginning 729 feet from DER, 244 feet right of centerline up to 100 feet AGL/259 feet MSL. Pole 300 feet from DER, 430 feet right of centerline, 16 feet AGL/39 feet MSL.

Rwy 28: Antenna 33 feet from DER, 412 feet left of centerline, 16 feet AGL/29 feet MSL. Bush 175 feet from DER, 178 feet right of centerline, 2 feet AGL/29 feet MSL. Bush 206 feet from DER, 121 feet left of centerline, 2 feet AGL/29 feet MSL. Trees beginning 2.39 NMs from DER, 4351 feet right of centerline, 100 feet AGL/ 710 feet MSL.

NOTE: Chart not to scale.

NOTE: DME or RADAR Required.



DEPARTURE ROUTE DESCRIPTION

TAKE-OFF RUNWAY 10: Turn right heading 250° (unless assigned otherwise) to intercept the SJU R-113 to PALCO INT, or climb in visual conditions to cross Cyril E. King airport at or above 2100, then on SJU R-113 to PALCO INT. Thence

TAKE-OFF RUNWAY 28: Turn left heading 250° (unless assigned otherwise) to intercept the SJU R-113 to PALCO INT. Thence

. . . . Maintain 3000' unless assigned lower altitude.

Expect clearance to flight level 280 or requested altitude if lower ten minutes after departure. Contact San Juan Departure.