

ILS RWY 10

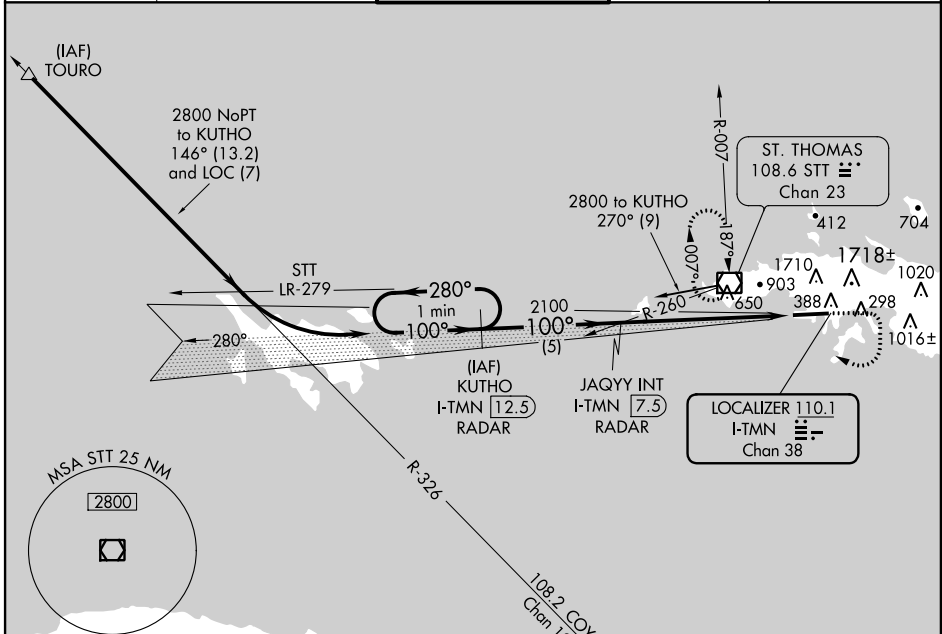
CYRIL E KING (STT)(TIST)

LOC/DME I-TMN 110.1 Chan 38	APP CRS 100°	Rwy Idg 7000 TDZE 23 Apt Elev 23
---	------------------------	---

Procedure not authorized when control tower closed.
Procedure not authorized north of Runway 10-28.
Procedure not authorized at night.

MISSED APPROACH: Climb to 500 then climbing right turn to 2800 via heading 180° then right turn direct STT VOR/DME and hold.

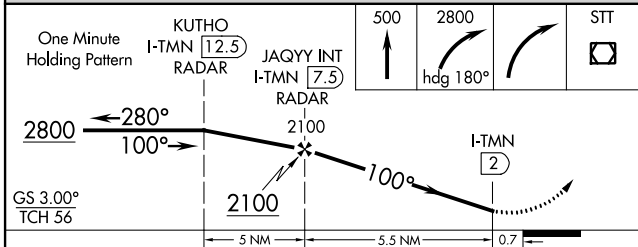
ATIS 124.0	SAN JUAN CENTER 128.65 279.6	ST. THOMAS TOWER ★ 118.8 (CTAF) 0 257.6 118.1 (NORTH OF ISLAND)	GND CON 121.9	UNICOM 122.95
----------------------	--	--	-------------------------	-------------------------



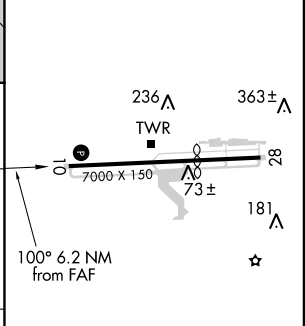
SE-3, 08 JAN 2015 to 05 FEB 2015

SE-3, 08 JAN 2015 to 05 FEB 2015

CAUTION: Pilots may encounter false illusory indications during night approaches to Runway 10 when using outside visual cues for vertical guidance.



ELEV 23	D TDZE 23
---------	------------------



CATEGORY	A	B	C	D
S-ILS 10	372-1¼		349 (400-1¼)	
S-LOC 10	620-1	597 (600-1)	620-1½ 597 (600-1½)	620-1¾ 597 (600-1¾)
CIRCLING	660-1¼	637 (700-1¼)	660-1¾ 637 (700-1¾)	660-2 637 (700-2)

REIL Rwy 10					
MIRL Rwy 10-28					
FAF to MAP 5.5 NM					
Knots	60	90	120	150	180
Min:Sec	5:30	3:40	2:45	2:12	1:50