


VORTAC SJU 114.0 Chan 87	APP CRS 082°	Rwy Idg THRE Apt Elev 9 9	8016
--	------------------------	---	-------------

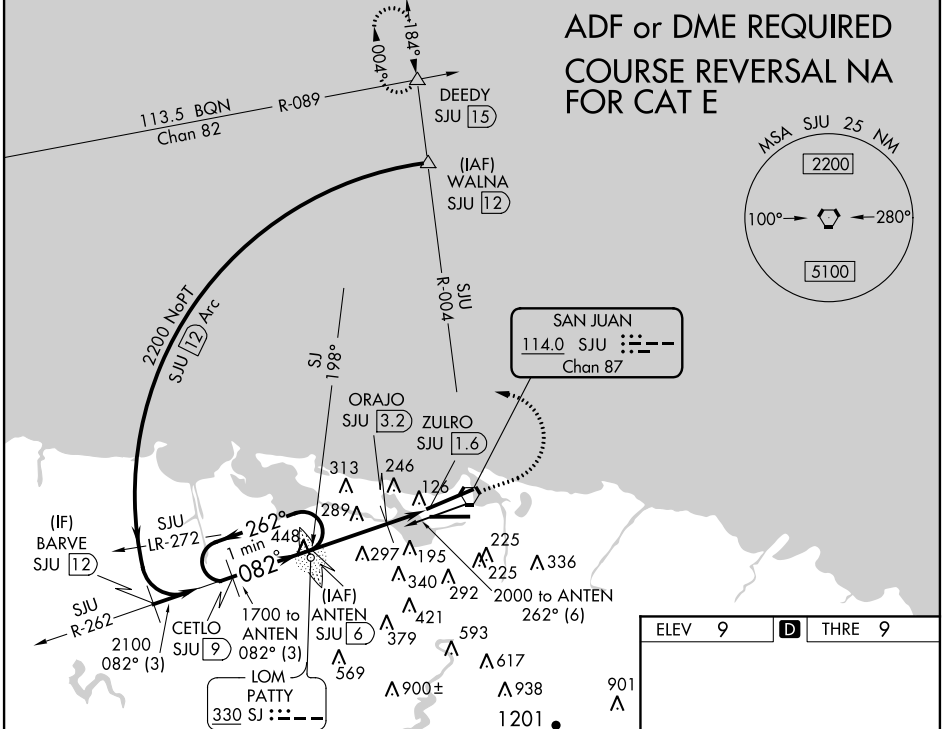
VOR or TACAN RWY 10

LUIS MUNOZ MARIN INTL (SJU)(TJSJ)

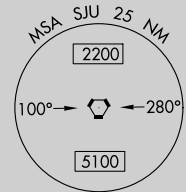
▼ When VGSI inop, Straight-in/Circling Rwy 10 procedure NA at night. Visibility reduction by helicopters NA. Circling NA for Cat E south of Rwy 10-28.
▲ Inop table does not apply to S-10 Cats A, B and ORAJO fix minimums S-10 Cats A, B. For inop MALSR, increase S-10 Cats C, D, E visibility to 1¾, increase ORAJO fix minimums S-10 Cats C, D, E visibility to 1¾.

MALSR

MISSED APPROACH: Climb to 2000 then climbing left turn to 3000 on heading 320° and SJU VORTAC R-004 to DEEDY INT/15 DME and hold.

ATIS 125.8	SAN JUAN APP CON 119.4 269.2 120.9 290.2 (WEST & SW) (NORTH & EAST)	SAN JUAN TOWER 132.05 257.8	GND CON 121.9 348.6	CLNC DEL 126.4 284.6
----------------------	--	---------------------------------------	-------------------------------	--------------------------------

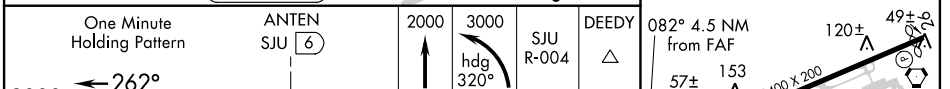


ADF or DME REQUIRED
COURSE REVERSAL NA
FOR CAT E



SE-3, 08 JAN 2015 to 05 FEB 2015

SE-3, 08 JAN 2015 to 05 FEB 2015



CATEGORY	A	B	C	D	E
S-10	640-1	631 (700-1)	640-1¾		631 (700-1¾)
CIRCLING	640-1	631 (700-1)	640-1¾	640-2	640-2¼
ORAJO FIX MINIMUMS (DME REQUIRED)					
S-10	500-1 491 (500-1)				
CIRCLING	600-1	591 (600-1)	600-1½	600-2	640-2¼
REIL Rwy 26 HIRL Rws 8-26 and 10-28 FAF to MAP 4.5 NM					
Knots					
	60	90	120	150	180
Min:Seq					
	4:30	3:00	2:15	1:48	1:30