

(VERMO5.VERMO) 14093

VERMO FIVE DEPARTURE

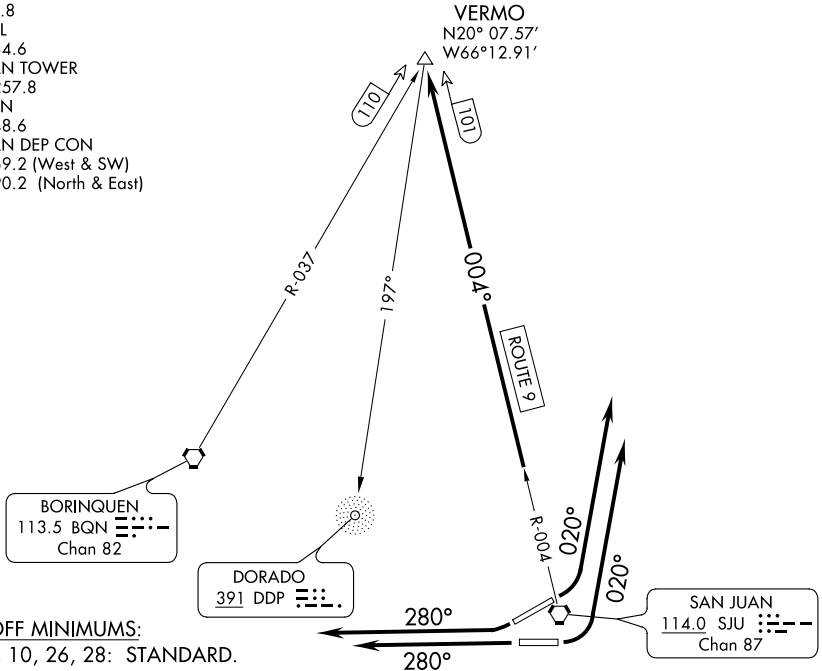
SL-784 (FAA)

LUIS MUNOZ MARIN INTL (SJU)(TJSJ)

SAN JUAN, PUERTO RICO

ATIS 125.8
 CLNC DEL
 126.4 284.6
 SAN JUAN TOWER
 132.05 257.8
 GND CON
 121.9 348.6
 SAN JUAN DEP CON
 119.4 269.2 (West & SW)
 120.9 290.2 (North & East)

VERMO
 N20° 07.57'
 W66° 12.91'



TAKE-OFF MINIMUMS:
 RWY 8, 10, 26, 28: STANDARD.

TAKE-OFF OBSTACLE NOTES:

- Rwy 8: Trees beginning 21' from DER, left and right of centerline, up to 84' AGL/107' MSL.
- Rwy 10: Trees beginning 157' from DER, left and right of centerline, up to 54' AGL/61' MSL.
- Rwy 26: Bldg and trees beginning 8' from DER, 339' right of centerline, up to 138' AGL/154' MSL. Sign and bushes beginning 381' from DER, 374' left of centerline, up to 28' AGL/35' MSL.
- Rwy 28: Bush and trees beginning 159' from DER, 476' left of centerline, up to 61' AGL/71' MSL. Pole 438' from DER, 587' left of centerline, 31' AGL/38' MSL.

NOTE: Radar Required.

NOTE: Chart not to scale.

DEPARTURE ROUTE DESCRIPTION

- TAKE-OFF RUNWAY 8:** Climbing left turn heading 020° or as assigned by ATC, expect vectors to intercept SJU R-004 to VERMO INT. Thence. . . .
- TAKE-OFF RUNWAY 10:** Climbing left turn heading 020° or as assigned by ATC, expect vectors to intercept SJU R-004 to VERMO INT. Thence. . . .
- TAKE-OFF RUNWAY 26:** Climb heading 280° or as assigned by ATC, expect vectors to intercept SJU R-004 to VERMO INT. Thence. . . .
- TAKE-OFF RUNWAY 28:** Climb heading 280° or as assigned by ATC, expect vectors to intercept SJU R-004 to VERMO INT. Thence. . . .

. . . . Maintain 5000 unless assigned lower altitude. Expect clearance to FL280, or requested altitude if lower, ten minutes after departure.

VERMO FIVE DEPARTURE
 (VERMO5.VERMO) 14093

SAN JUAN, PUERTO RICO
 LUIS MUNOZ MARIN INTL (SJU)(TJSJ)

SE-3, 08 JAN 2015 to 05 FEB 2015

SE-3, 08 JAN 2015 to 05 FEB 2015