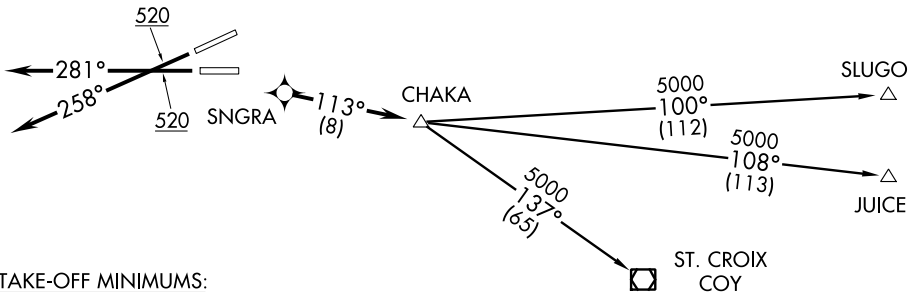


ATIS 125.8
 CLNC DEL
 126.4 284.6
 SAN JUAN TOWER
 132.05 257.8
 GND CON
 121.9 348.6
 SAN JUAN DEP CON
 119.4 269.2 (West & SW)
 120.9 290.2 (North & East)



TAKE-OFF MINIMUMS:

RWY 8, 10: NA-ATC.

RWY 26: STANDARD with minimum obstacle climb of 311' per NM to 4800.
ATC climb of 350' per NM to 5000.

RWY 28: STANDARD with minimum obstacle climb of 323' per NM to 4800.
ATC climb of 350' per NM to 5000.

NOTE: GPS Required.

NOTE: For Prop and Turboprop aircraft only.

NOTE: RNAV 1.

NOTE: RADAR Required.

TAKE-OFF OBSTACLE NOTES:

Rwy 26: Bldg and trees beginning 8' from DER, 339' right of centerline, up to 138' AGL/154' MSL.
Sign and bushes beginning 381' from DER, 374' left of centerline, up to 28' AGL/35' MSL.

Rwy 28: Bush and trees beginning 159' from DER, 476' left of centerline, up to 61' AGL/71' MSL.
Pole 438' from DER, 587' left of centerline, 31' AGL/38' MSL.

NOTE: Chart not to scale.



DEPARTURE ROUTE DESCRIPTION

TAKE-OFF RUNWAY 26: Climb heading 258° to 520, continue climb expect vectors to SNGRA, then via 113° track to CHAKA. Thence. . . .

TAKE-OFF RUNWAY 28: Climb heading 281° to 520, continue climb expect vectors to SNGRA, then via 113° track to CHAKA. Thence. . . .

. . . . Via assigned transition. Maintain 5000 unless assigned lower altitude. Expect clearance to FL280, or requested altitude if lower, ten minutes after departure.

JUICE TRANSITION (SNGRA1.JUICE):

SLUGO TRANSITION (SNGRA1.SLUGO):

ST. CROIX TRANSITION (SNGRA1.COY):