

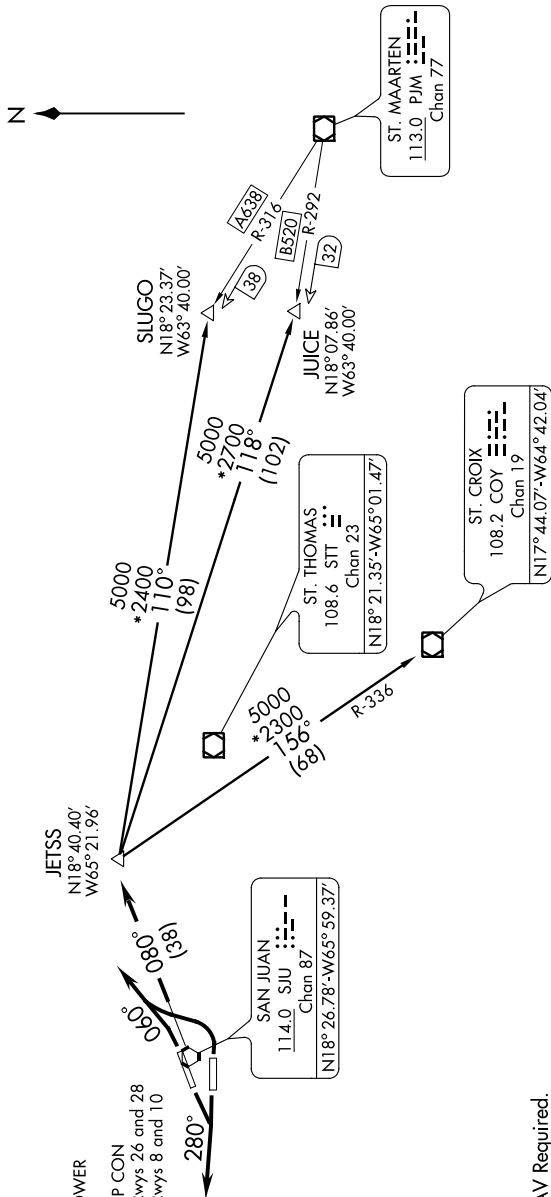
# JETSS ONE DEPARTURE

SL-784 (FAA)

LUIS MUNOZ MARIN INTL (SJU)(TJSJ)  
SAN JUAN, PUERTO RICO

SE-3, 08 JAN 2015 to 05 FEB 2015

ATIS 125.8  
 CLNC DEL 126.4 284.6  
 GND CON 121.9 348.6  
 SAN JUAN TOWER 132.05 257.8  
 SAN JUAN DEP CON 119.4 269.2 Rwys 26 and 28  
 120.9 290.2 Rwys 8 and 10



NOTE: RNAV Required.  
 NOTE: Chart not to scale.

## DEPARTURE ROUTE DESCRIPTION

**TAKE-OFF RUNWAYS 8 AND 10:** Turn left heading 060° for vector to intercept SJU R-080 to JETSS INT. Thence.....  
**TAKE-OFF RUNWAYS 26 AND 28:** Fly heading 280° for vector to intercept SJU R-080 to JETSS INT. Thence.....  
 ...Maintain 5000' unless assigned lower altitude. Expect clearance to FL 280 or requested altitude, if lower, ten (10) minutes after departure.  
**JUICE TRANSITION (JETSS1.JUICE):** From over JETSS INT direct to JUICE DME. Thence as filed.  
**SLUGO TRANSITION (JETSS1.SLUGO):** From over JETSS INT direct to SLUGO DME. Thence as filed.  
**ST. CROIX TRANSITION (JETSS1.COY):** From over JETSS INT direct to COY VOR/DME. Thence as filed.

SE-3, 08 JAN 2015 to 05 FEB 2015