

LOC I-SJU <b>110.3</b>	APP CRS <b>078°</b>	Rwy Idg <b>9384</b>
		TDZE <b>9</b>
		Apt Elev <b>9</b>

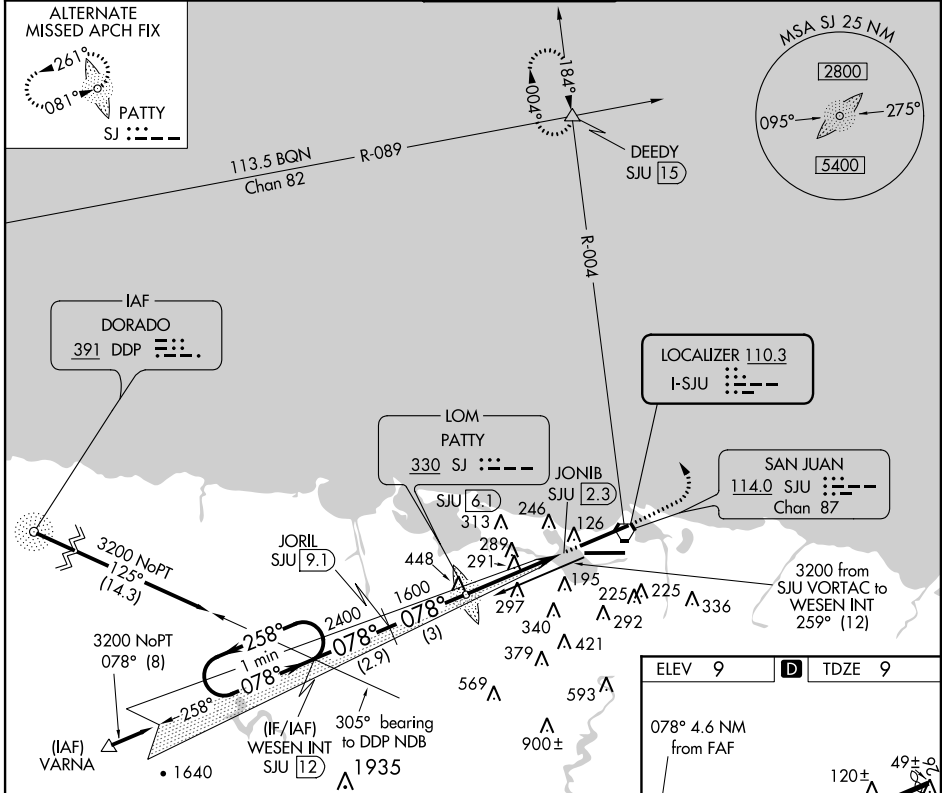
# ILS or LOC RWY 8

LUIS MUNOZ MARIN INTL (SJU)(TJSJ)

**▽** For inoperative MALSRS, increase S-ILS 8 all Cats visibility to 1 mile. DME Required.

MISSED APPROACH: Climb to 2000 then climbing left turn to 3000 on heading 320° and SJU VORTAC to R-004 to DEEDY Int/SJU 15 DME and hold.

ATIS <b>125.8</b>	SAN JUAN APP CON <b>119.4 269.2</b> (WEST & SW) <b>120.9 290.2</b> (NORTH & EAST)	SAN JUAN TOWER <b>132.05 257.8</b>	GND CON <b>121.9 348.6</b>	CLNC DEL <b>126.4 284.6</b>
----------------------	-----------------------------------------------------------------------------------------	---------------------------------------	-------------------------------	--------------------------------



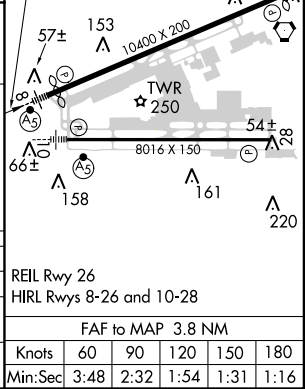
One Minute Holding Pattern	WESEN INT SJU <b>12</b>	JORIL SJU <b>9.1</b>	PATTY LOM	DEEDY
3200	← 258°	078° →	1541	2000
GS 3.00° TCH 46	078°	078°	1600	3000
VGSI and ILS glidepath not coincident (VGSI Angle 3.00/TCH 71).	2.9 NM	3 NM	3.8 NM	0.8 NM
	A	B	C	D
S- ILS-8	311-½		302 (400-½)	
S- LOC-8	560-½	551 (600-½)	560-1	560-1¼
			551 (600-1)	551 (600-1¼)
CIRCLING	600-1	591 (600-1)	600-1½	600-2
			591 (600-1½)	591 (600-2)

ILS unusable 0.8 NM from threshold inbound.

hdg 320°

SJU R-004

JONIB SJU **2.3**



SE-3, 08 JAN 2015 to 05 FEB 2015

SE-3, 08 JAN 2015 to 05 FEB 2015