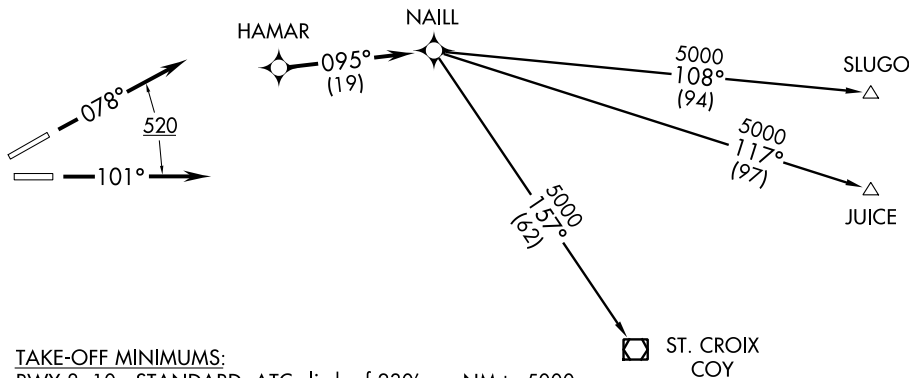


ATIS 125.8
CLNC DEL
126.4 284.6
SAN JUAN TOWER
132.05 257.8
GND CON
121.9 348.6
SAN JUAN DEP CON
119.4 269.2 (West & SW)
120.9 290.2 (North & East)



TAKE-OFF MINIMUMS:
RWY 8, 10: STANDARD. ATC climb of 230' per NM to 5000.
RWY 26, 28: NA-ATC.

- NOTE: GPS Required.
- NOTE: For Prop and Turboprop aircraft only.
- NOTE: RNAV 1.
- NOTE: RADAR Required.

TAKE-OFF OBSTACLE NOTES:
Rwy 8: Trees beginning 21' from DER, left and right of centerline, up to 84' AGL/107' MSL.
Rwy 10: Trees beginning 157' from DER, left and right of centerline, up to 54' AGL/61' MSL.

NOTE: Chart not to scale.



DEPARTURE ROUTE DESCRIPTION

TAKE-OFF RUNWAY 8: Climb heading 078° to 520, continue climb expect vectors to HAMAR, then via 095° track to NAILL. Thence. . . .

TAKE-OFF RUNWAY 10: Climb heading 101° to 520, continue climb expect vectors to HAMAR, then via 095° track to NAILL. Thence. . . .

. . . . Via assigned transition. Maintain 5000 unless assigned lower altitude. Expect clearance to FL280, or requested altitude if lower, ten minutes after departure.

- JUICE TRANSITION (HAMAR1.JUICE):
- SLUGO TRANSITION (HAMAR1.SLUGO):
- ST. CROIX TRANSITION (HAMAR1.COY):