

ATIS 125.8
CLNC DEL
126.4 284.6
SAN JUAN TOWER
132.05 257.8
GND CON
121.9 348.6
SAN JUAN DEP CON
119.4 269.2 (West & SW)
120.9 290.2 (North & East)

TAKE-OFF MINIMUMS:

Rwys 8, 10, 26, 28: STANDARD.

NOTE: GPS Required.

NOTE: For Turbojet aircraft only.

NOTE: RNAV 1.

NOTE: RADAR Required.

TAKE-OFF OBSTACLES:

Rwy 8: Trees beginning 21' from DER, left and right of centerline, up to 84' AGL/107' MSL.

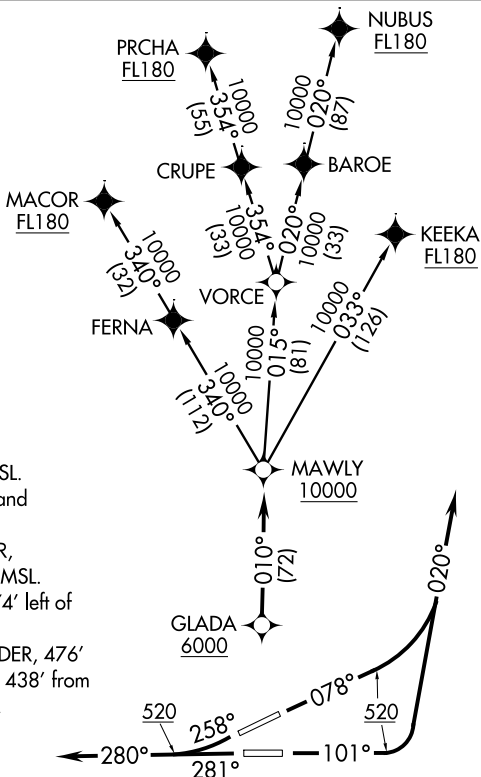
Rwy 10: Trees beginning 157' from DER, left and right of centerline, up to 54' AGL/61' MSL.

Rwy 26: Bldg and trees beginning 8' from DER, 339' right of centerline, up to 138' AGL/154' MSL.

Sign and bushes beginning 381' from DER, 374' left of centerline, up to 28' AGL/35' MSL.

Rwy 28: Bush and trees beginning 159' from DER, 476' left of centerline, up to 61' AGL/71' MSL. Pole 438' from DER, 587' left of centerline, 31' AGL/38' MSL.

NOTE: Chart not to scale.



SE-3, 08 JAN 2015 to 05 FEB 2015

SE-3, 08 JAN 2015 to 05 FEB 2015

DEPARTURE ROUTE DESCRIPTION

TAKE-OFF RUNWAY 8: Climb heading 078° to 520, then climbing left turn heading 020° or as assigned by ATC, expect vectors to GLADA, then via 010° track to MAWLY. Thence. . .

TAKE-OFF RUNWAY 10: Climb heading 101° to 520, then climbing left turn heading 020° or as assigned by ATC, expect vectors to GLADA, then via 010° track to MAWLY. Thence. . .

TAKE-OFF RUNWAY 26: Climb heading 258° to 520, continue climb heading 280° or as assigned by ATC, expect vectors to GLADA, then via 010° track to MAWLY. Thence. . .

TAKE-OFF RUNWAY 28: Climb heading 281° to 520, continue climb heading 280° or as assigned by ATC, expect vectors to GLADA, then via 010° track to MAWLY. Thence. . .

. . . Via assigned transition. Maintain 5000 unless assigned lower altitude. Expect clearance to FL280, or requested altitude if lower, ten minutes after departure.

KEEKA TRANSITION (GLADA2.KEEKA):

MACOR TRANSITION (GLADA2.MACOR):

NUBUS TRANSITION (GLADA2.NUBUS):

PRCHA TRANSITION (GLADA2.PRCHA):