

(CRSTL1.CRSTL) 14093

# CRSTL ONE DEPARTURE

SL-784 (FAA)

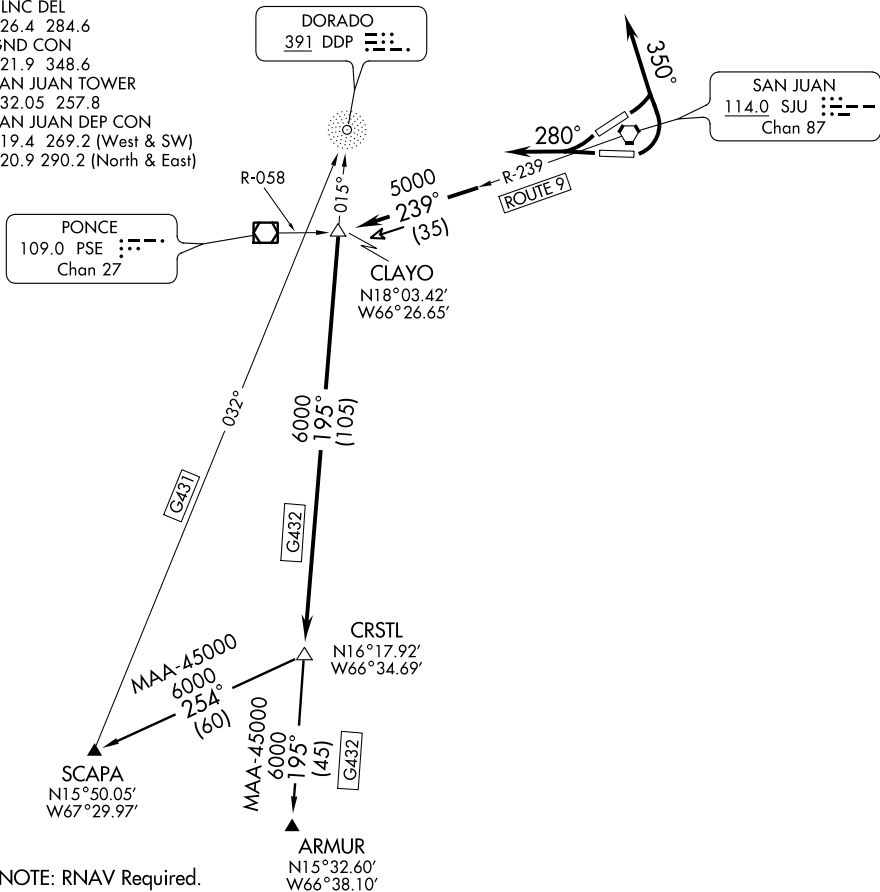
LUIS MUNOZ MARIN INTL (SJU)(TJSJ)  
SAN JUAN, PUERTO RICO

ATIS 125.8  
CLNC DEL  
126.4 284.6  
GND CON  
121.9 348.6  
SAN JUAN TOWER  
132.05 257.8  
SAN JUAN DEP CON  
119.4 269.2 (West & SW)  
120.9 290.2 (North & East)

PONCE  
109.0 PSE :--  
Chan 27

DORADO  
391 DDP :--  
Chan 27

SAN JUAN  
114.0 SJU :--  
Chan 87



NOTE: RNAV Required.  
NOTE: Chart not to scale.

## DEPARTURE ROUTE DESCRIPTION

TAKE-OFF RUNWAYS 8 AND 10: Turn left heading 350° for vector to intercept SJU R-239 to CLAYO INT. Then via G432 to CRSTL INT. Thence....

TAKE-OFF RUNWAYS 26 AND 28: Fly heading 280° for vector to intercept SJU R-239 to CLAYO INT. Then via G432 to CRSTL INT. Thence....

....Maintain 5000' unless assigned lower altitude. Expect clearance to FL280 or requested altitude, if lower, ten minutes after departure.

ARMUR TRANSITION (CRSTL1.ARMUR): From over CRSTL INT via G432 (DDP bearing 015°) to ARMUR INT.

SCAPA TRANSITION (CRSTL1.SCAPA): From over CRSTL INT direct to SCAPA INT.

CRSTL ONE DEPARTURE  
(CRSTL1.CRSTL) 14093

SAN JUAN, PUERTO RICO  
LUIS MUNOZ MARIN INTL (SJU)(TJSJ)

SE-3, 08 JAN 2015 to 05 FEB 2015

SE-3, 08 JAN 2015 to 05 FEB 2015