

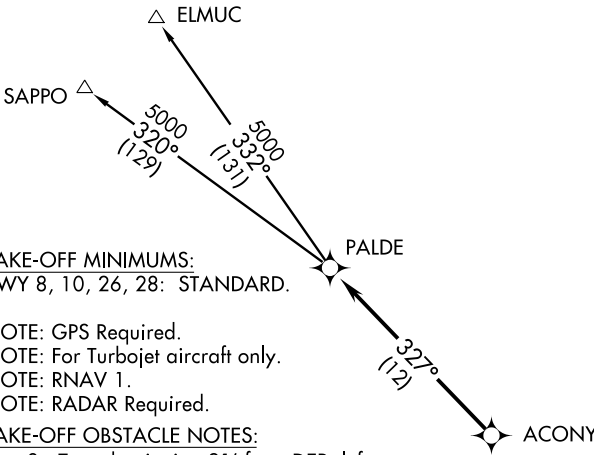
(ACONY1.ACONY) 14093

# ACONY ONE DEPARTURE (RNAV)

LUIS MUNOZ MARIN INTL (SJU)(TJSJ)

SL-784 (FAA)

SAN JUAN, PUERTO RICO



ATIS 125.8  
 CLNC DEL  
 126.4 284.6  
 SAN JUAN TOWER  
 132.05 257.8  
 GND CON  
 121.9 348.6  
 SAN JUAN DEP CON  
 119.4 269.2 (West & SW)  
 120.9 290.2 (North & East)

**TAKE-OFF MINIMUMS:**  
 RWY 8, 10, 26, 28: STANDARD.

NOTE: GPS Required.  
 NOTE: For Turbojet aircraft only.  
 NOTE: RNAV 1.  
 NOTE: RADAR Required.

**TAKE-OFF OBSTACLE NOTES:**

Rwy 8: Trees beginning 21' from DER, left and right of centerline, up to 84' AGL/107' MSL.  
 Rwy 10: Trees beginning 157' from DER, left and right of centerline, up to 54' AGL/61' MSL.  
 Rwy 26: Bldg and trees beginning 8' from DER, 339' right of centerline, up to 138' AGL/154' MSL.  
 Sign and bushes beginning 381' from DER, 374' left of centerline, up to 28' AGL/35' MSL.  
 Rwy 28: Bush and trees beginning 159' from DER, 476' left of centerline, up to 61' AGL/71' MSL. Pole 438' from DER, 587' left of centerline, 31' AGL/38' MSL.

NOTE: Chart not to scale.

## DEPARTURE ROUTE DESCRIPTION

**TAKE-OFF RUNWAY 8:** Climb heading 078° to 520, then climbing left turn heading 350° or as assigned by ATC, expect vectors to ACONY, then via 327° track to PALDE. Thence. . . .

**TAKE-OFF RUNWAY 10:** Climb heading 101° to 520, then climbing left turn heading 350° or as assigned by ATC, expect vectors to ACONY, then via 327° track to PALDE. Thence. . . .

**TAKE-OFF RUNWAY 26:** Climb heading 258° to 520, continue climb heading 280° or as assigned by ATC, expect vectors to ACONY, then via 327° track to PALDE. Thence. . . .

**TAKE-OFF RUNWAY 28:** Climb heading 281° to 520, continue climb heading 280° or as assigned by ATC, expect vectors to ACONY, then via 327° track to PALDE. Thence. . . .

. . . .Via assigned transition. Maintain 5000 unless assigned lower altitude. Expect clearance to FL280, or requested altitude if lower, ten minutes after departure.

ELMUC TRANSITION (ACONY1.ELMUC):

SAPPO TRANSITION (ACONY1.SAPPO):

SE-3, 08 JAN 2015 to 05 FEB 2015

SE-3, 08 JAN 2015 to 05 FEB 2015

# ACONY ONE DEPARTURE (RNAV)

(ACONY1.ACONY) 14093

SAN JUAN, PUERTO RICO

LUIS MUNOZ MARIN INTL (SJU)(TJSJ)