

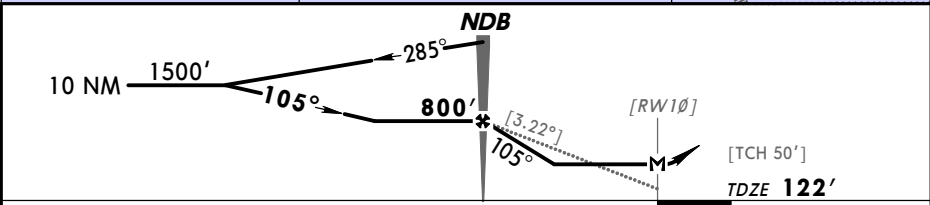
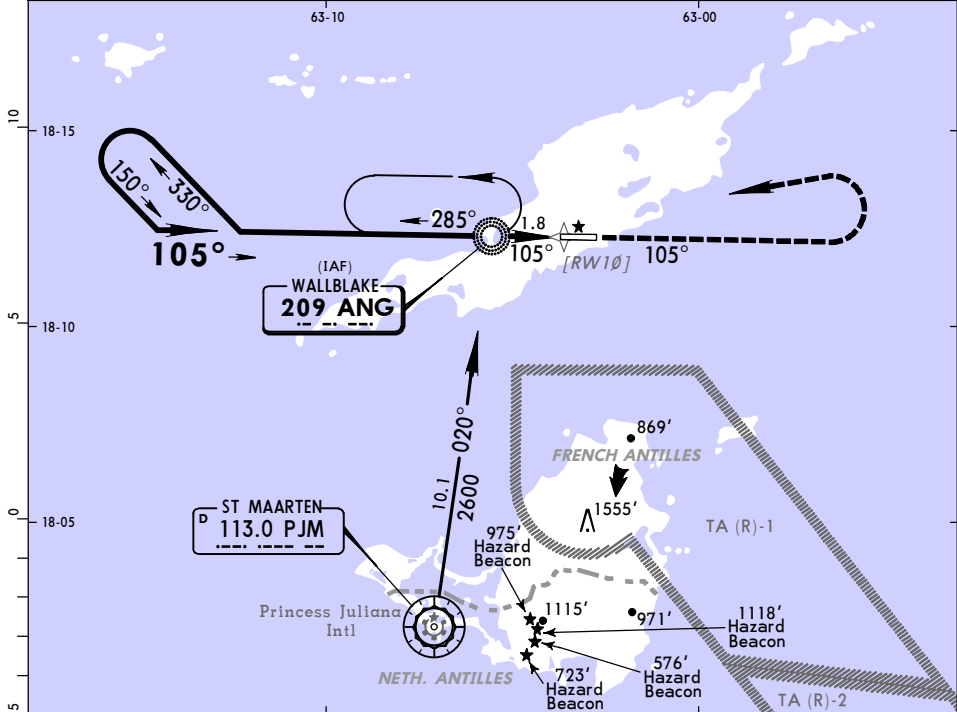
ADDITIONAL RUNWAY INFORMATION

RWY	RWY	SURFACE	USABLE LENGTHS	LANDING BEYOND		TAKE-OFF	WIDTH
				Threshold	Glide Slope		
10	28	RL PAPI-L (angle 3.0°)	4472' 1363m			4964' 1513m	98' 30m

TAKE-OFF

	AIR CARRIER (JAA)		AIR CARRIER (FAR 121)	
	LVP must be in force All Rwy's RCLM (DAY only) or RL	All Rwy's RCLM (DAY only) or RL	2 Eng	All Rwy's Adequate Vis Ref
A				
B	250m	400m	2 Eng	400m
C			3 & 4 Eng	
D	300m			

BRIEFING STRIP™	*JULIANA Approach				*LLOYD Tower				
	128.95				118.5				
	NDB ANG 209	Final Apch Crs 105°	Minimum Alt NDB 800' (678')	MDA(H) 640' (518')	Apt Elev 128'	<div style="border: 1px solid black; border-radius: 50%; width: 60px; height: 60px; margin: 0 auto; display: flex; align-items: center; justify-content: center;"> 2600' </div>			
	MISSED APCH: Climb to 2500' on a 105° bearing from ANG NDB within 10 NM of ANG NDB, then turn LEFT direct ANG NDB and hold, or as directed by ATC.								
Alt Set: hPa		TDZ Elev: 4 hPa		Trans level: FL 65		Trans alt: 5000'		MSA ANG NDB	



Gnd speed-Kts	70	90	100	120	140	160	PAPI-L 2500' on target ANG 209 105°
Descent angle [3.22°]	399	513	570	684	798	912	
NDB to MAP	1.8	1:33	1:12	1:05	0:54	0:46	

STRAIGHT-IN LANDING RWY 10				CIRCLE-TO-LAND			
MDA(H) 640' (518')							
A	1600m			Max Kts	MDA(H)		
B				100	640' (512') - 1600m		
C				135			
D	NOT APPLICABLE			180	640' (512') - 2400m		
D	NOT APPLICABLE			D	NOT APPLICABLE		

PANS OPS

CHANGES: Apt. name, communications, apt. elevation.